

INSTALLATION INSTRUCTION FOR SERIES SK

DRILLED HOLE

- › The drilled hole must be within the tolerances shown on the preceding data sheets.
- › Holes must be round within 0.05 mm.
- › With hard materials the bore roughness should be from $R_z = 10\text{--}30\ \mu\text{m}$ for best results.
- › Longitudinal rifles and spiral grooves should be avoided. These influence the sealing effectiveness.
- › The bore must be free of oil, grease and chips.

SETTING PROCEDURE

- › Insert the plug in the tool, making sure that the sleeve is against the nosepiece (Fig. 1).
- › After inserting the plug into the hole (making sure the tool is flush to the work surface) activate the tool to expand the plug. The mandrel will break apart when the proper tension has been reached (Fig. 2 and 3).

Note:

- › The assembly of KOENIG-EXPANDER® plugs should only be done in a **clean working area**.
- › Sleeve and mandrel of the **plug should not be cleaned, lubricated or have sealant (compound) applied**.

TOOLS

For trouble free installation of KOENIG-EXPANDER® plugs use the tools and appropriate components according to the data sheet.

PLUG REMOVAL

With KOENIG-EXPANDER® SK Series plug removal is possible.

Procedure:

- › Drive the mandrel from the sleeve with a punch.
- › Drill out the sleeve and remove the mandrel.
- › Bore the hole to the **next larger Expander diameter** per the data sheet.
- › Clear chips, remnants of the sleeve, and oil and grease from the bore.
- › Inspect bore to confirm that it meets all requirements.
- › Install a new KOENIG-EXPANDER®.

Note:

After plug removal always install the next larger size plug.

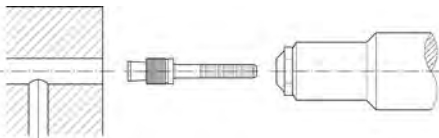


Fig. 1

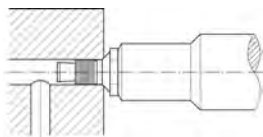


Fig. 2

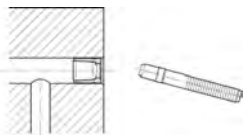


Fig. 3