



## SEALING PLUGS

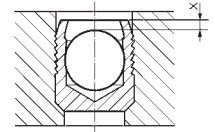
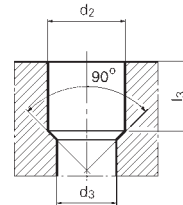
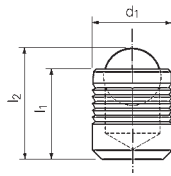
### SERIES MB 600 INCH-VERSION

### KOENIG-EXPANDER®

Sleeve and Ball clear passivated per MIL S 5002, Aerospace Quality

#### Material

Sleeve: Stainless Steel 1.4305  
 Ball: Stainless Steel 1.4301  
 1.4034 MB 600-093



Toleranzen / Tolerances  $d_2$ : MB 600-093A =  $-0.002$   
 MB 600-125A bis/a MB 600-281A =  $-0.004$

**Important:** See installation instructions on pages 94–95  
 Installation requirements on pages 100–106

**3D DATA:** <http://kvt.partcommunity.com>

Part Number	$d_1$	$l_1$	$l_2 \sim$ Ref.	$d_2$	$d_3 \text{ max}$	$l_3 \text{ min.}$	x 0 -0.012	Packaging Unit	
MB 600-093A	0,093	0,100	0,120	0,0937	0,062	0,095	0,012	100	1000
MB 600-125A	0,125	0,138	0,170	0,1250	0,093	0,125	0,012	100	1000
MB 600-156A	0,156	0,150	0,195	0,1562	0,125	0,130	0,012	100	1000
MB 600-187A	0,187	0,193	0,260	0,1875	0,156	0,152	0,012	100	500
MB 600-218A	0,218	0,225	0,300	0,2187	0,187	0,187	0,012	100	500
MB 600-250A	0,250	0,260	0,350	0,2500	0,218	0,212	0,012	100	500
MB 600-281A	0,281	0,285	0,380	0,2812	0,250	0,250	0,012	100	500

Dimensions in inches

### PRESSURE PERFORMANCE

Series MB 600 Inch	Base material of the Installation						
	① ETG-100 / 44SMn28 AISI 1144	② C15Pb 1.0403	③ EN-GJL-250 EN 1561	④ EN-GJS-500-7 EN 1563	⑤ AlCu4Mg1 EN AW-2024-T3	⑥ AlMgSiPb EN AW-6012-T6	⑦ G-AlSi7Mg EN AC-42100
Ø 0,093 – 0,281	1.400 bar / 20.300 psi 450 bar / 6.500 psi					1.200 bar / 17.400 psi 380 bar / 5.500 psi	

Proof Pressure Test ©

Max. allowable Working Pressure = Nominal Pressure